



2020

LOUISIANA LIGHTNING REPORT



ABOUT THIS REPORT

The 2020 Lightning Report was prepared by Earth Networks using the Earth Networks Total Lightning Network (ENTLN). The following report includes in-cloud, cloud-to-ground, and total lightning data for this state and the surrounding water bodies (if any) throughout 2020. Counts, densities, rankings, Dangerous Thunderstorm Alerts (DTAs), and Thunder Days in this report are from January 1, 2020 to December 31, 2020.

THE EARTH NETWORKS TOTAL LIGHTNING NETWORK (ENTLN)

The lightning data in this report is derived from the Earth Networks Total Lightning Network (ENTLN), which monitors the combination of in-cloud and cloud-to-ground lightning strikes over 100 countries. With over 1,800 sensors, the ENTLN is the most extensive and technologically advanced total lightning network in the world. ENTLN has been specifically deployed to detect real-time lightning and provide advanced warning for severe weather events that could threaten public safety and operational efficiency.

IN THIS REPORT



Table of Contents

- 03** Report Terminology
- 04** Lightning Counts
- 06** Lightning Density
- 08** Dangerous Thunderstorm Alerts
- 09** Thunder Days
- 10** Contact

REPORT TERMINOLOGY

To help you better understand the insights from this lightning report, we've included definitions of our frequently used report terminology below.

Lightning Pulse: This report measures lightning pulses. A pulse is a surge of electric current in lightning usually accompanied by a burst of light. Pulses are classified as In-cloud (IC) or Cloud-to-Ground (CG).

Lightning Flash: A lightning flash is a collection of pulses close in space and time that approximates the continuous ionized channels of a complete bolt of lightning.

Cloud-to-Ground Lightning (CG): Lightning that happens between opposite charges in a cloud and on the ground.

In-Cloud Lightning (IC): Lightning that occurs between opposite charges within a thunderstorm cloud.

Total Lightning Detection: The combination of all in-cloud and cloud-to-ground lightning activity.

Pulse Density: The number of lightning pulses per square mile per year.

Dangerous Thunderstorm Alerts (DTAs): Earth Networks patented advanced severe weather warnings that notify users of incoming storms up to 45 minutes before storm arrival.

Thunder Days: Any given day where lightning was detected in a certain area.

TOTAL LIGHTNING

is the combination of cloud-to-ground (CG) and in-cloud (IC) lightning strikes



Cloud-to-Ground lightning:

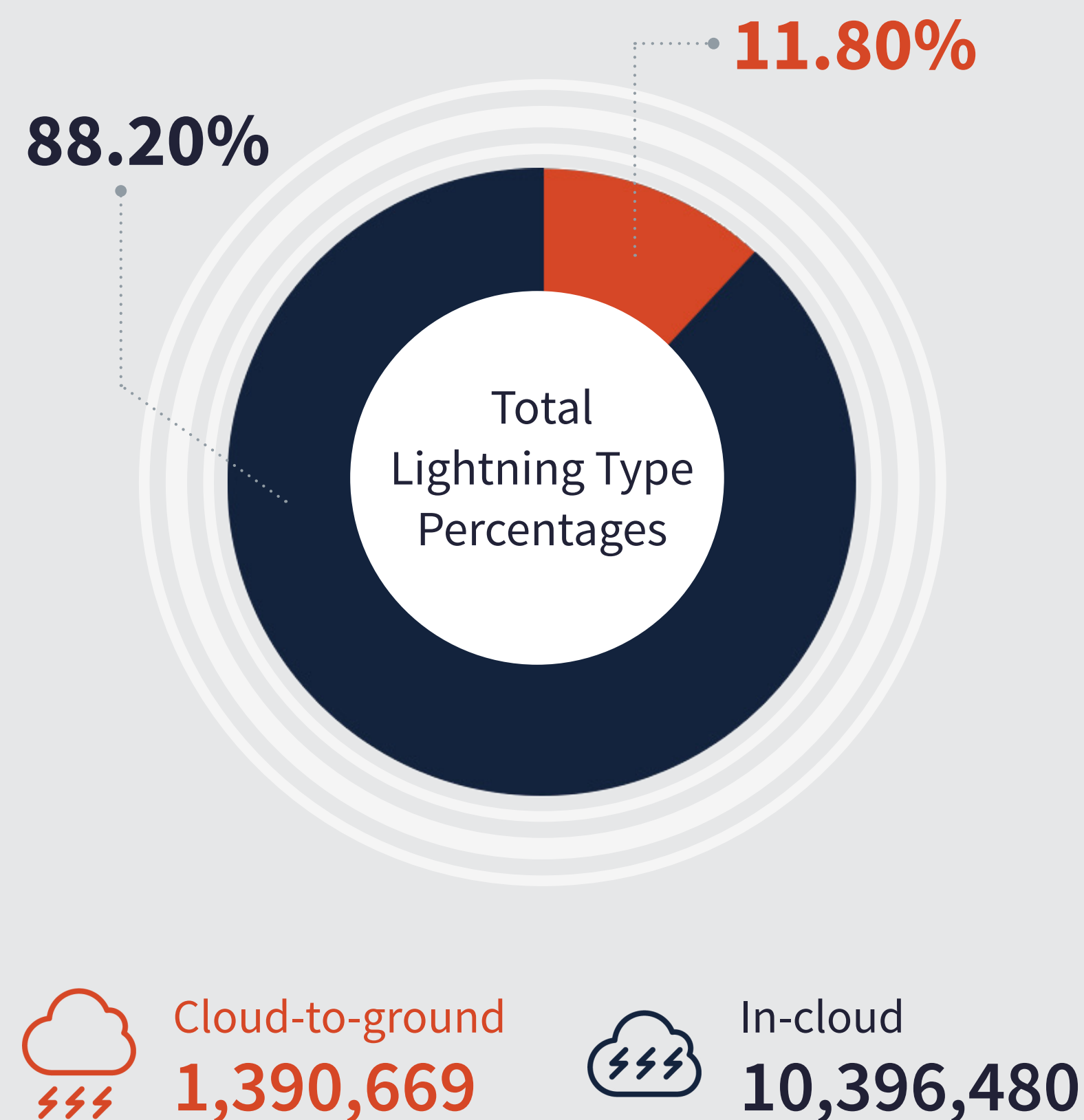
Lightning that happens between opposite charges in a cloud and on the ground

In-Cloud lightning:

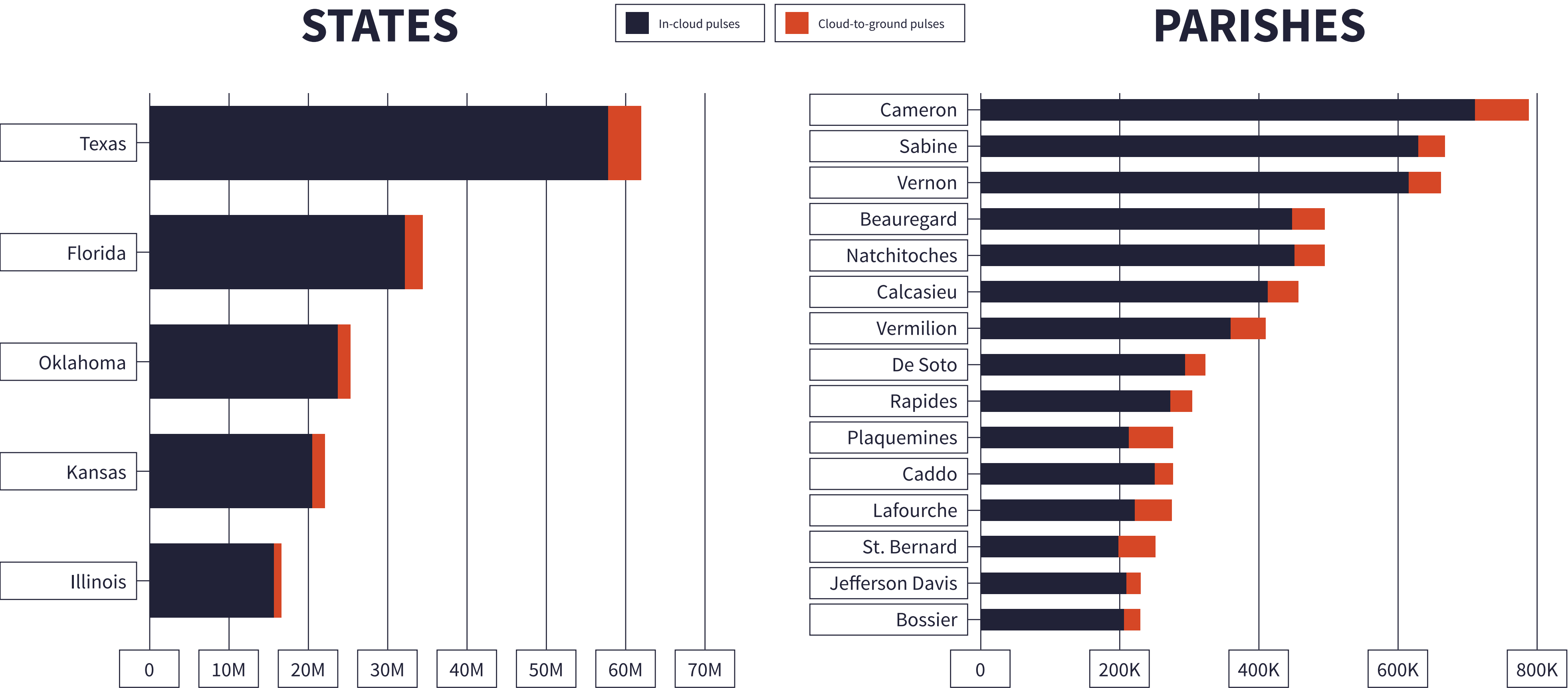
Lightning that occurs between opposite charges within a thunderstorm cloud

LOUISIANA TOTAL LIGHTNING PULSES

11,787,379

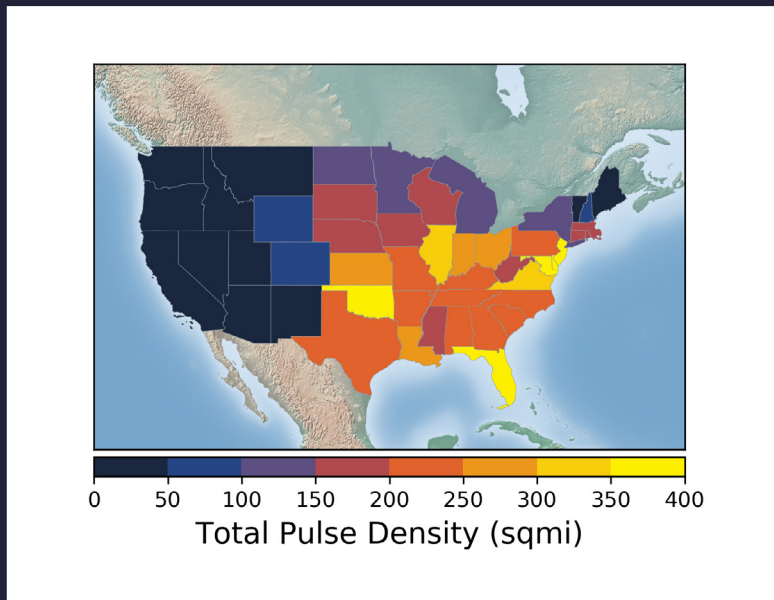
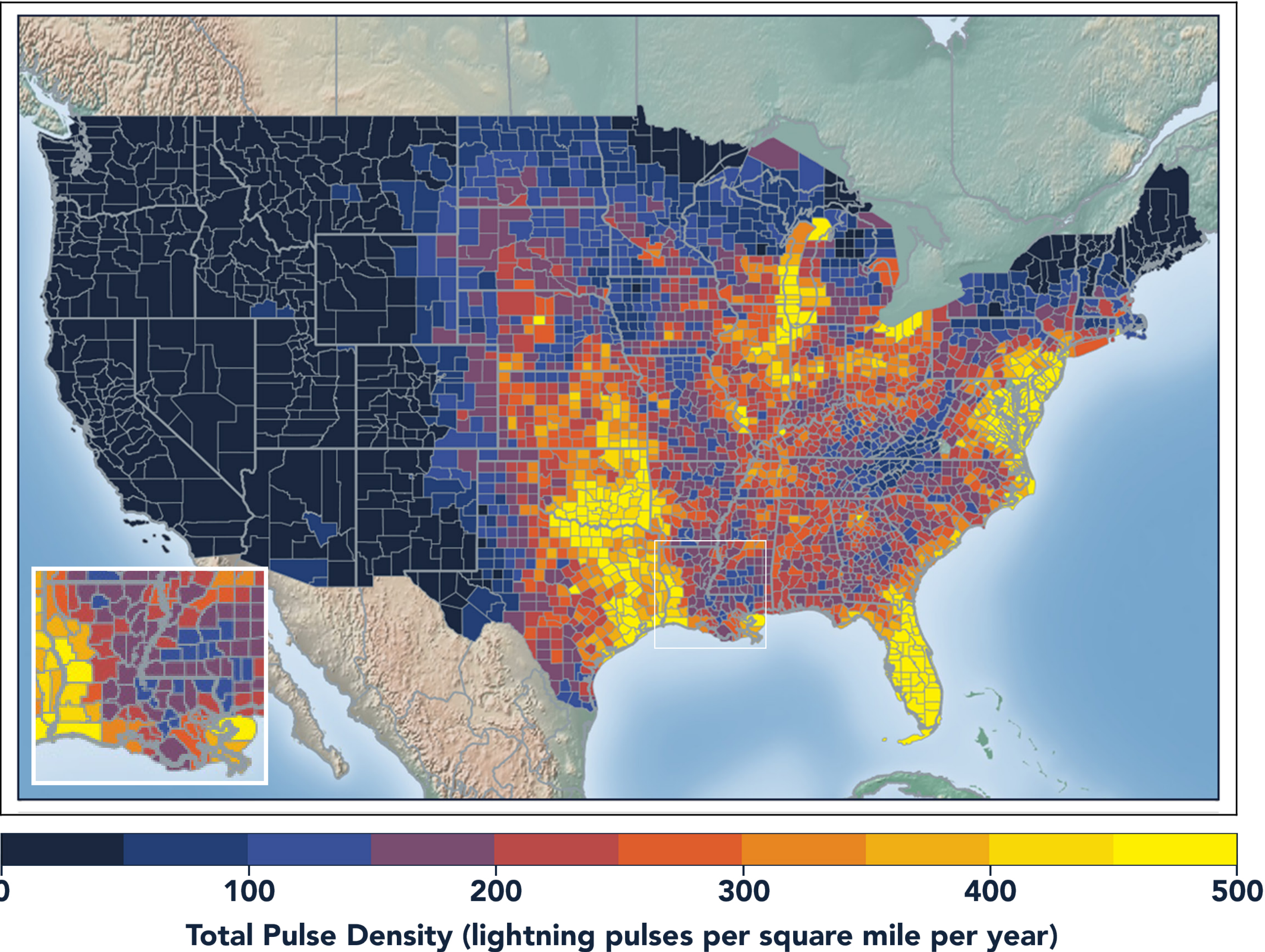


LIGHTNING COUNT RANKINGS



Louisiana ranked 12 in total lightning pulses for 2020.

TOTAL (CG+IC) PULSE DENSITY MAP

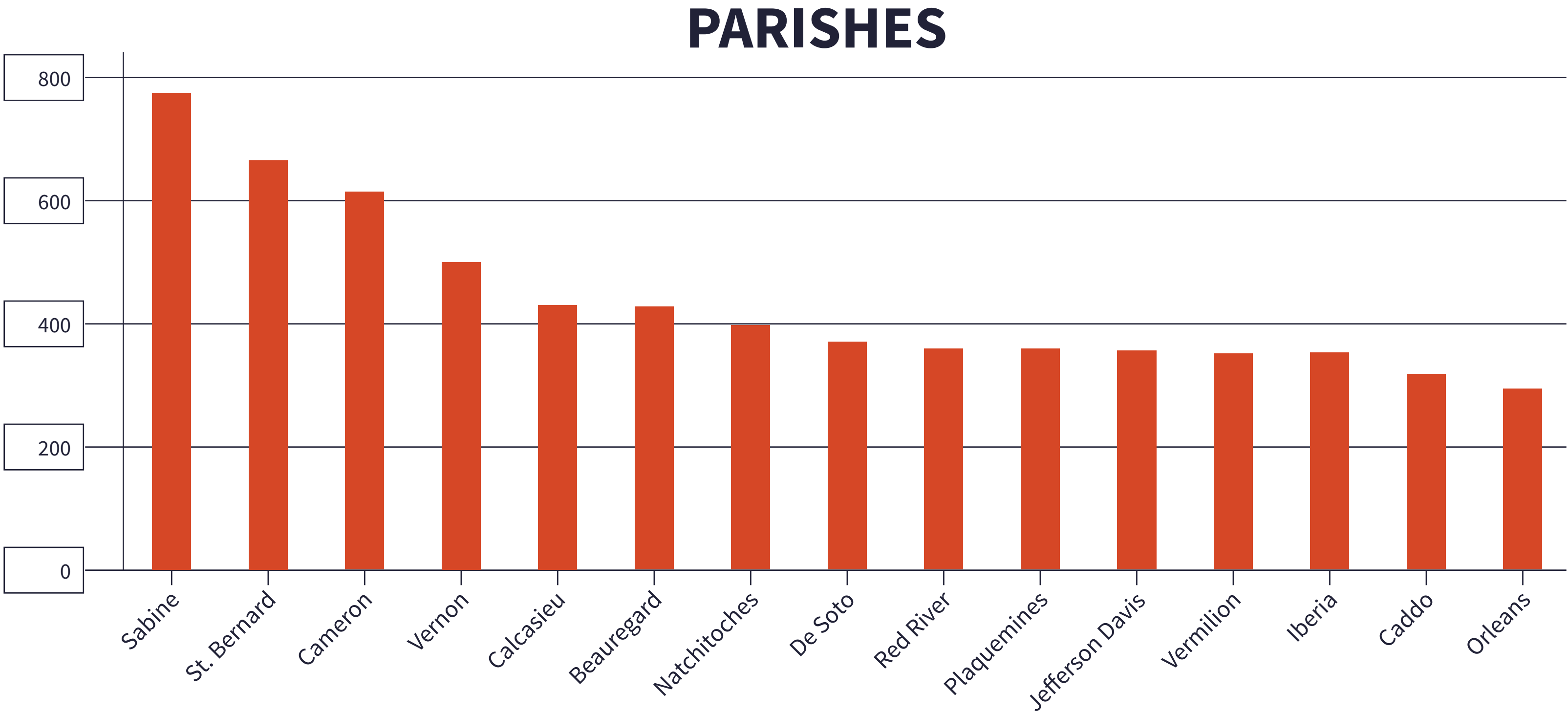


Pulse density is a better indicator of lightning activity than total lightning counts because it enables us to compare different sized areas (like states and counties) fairly.

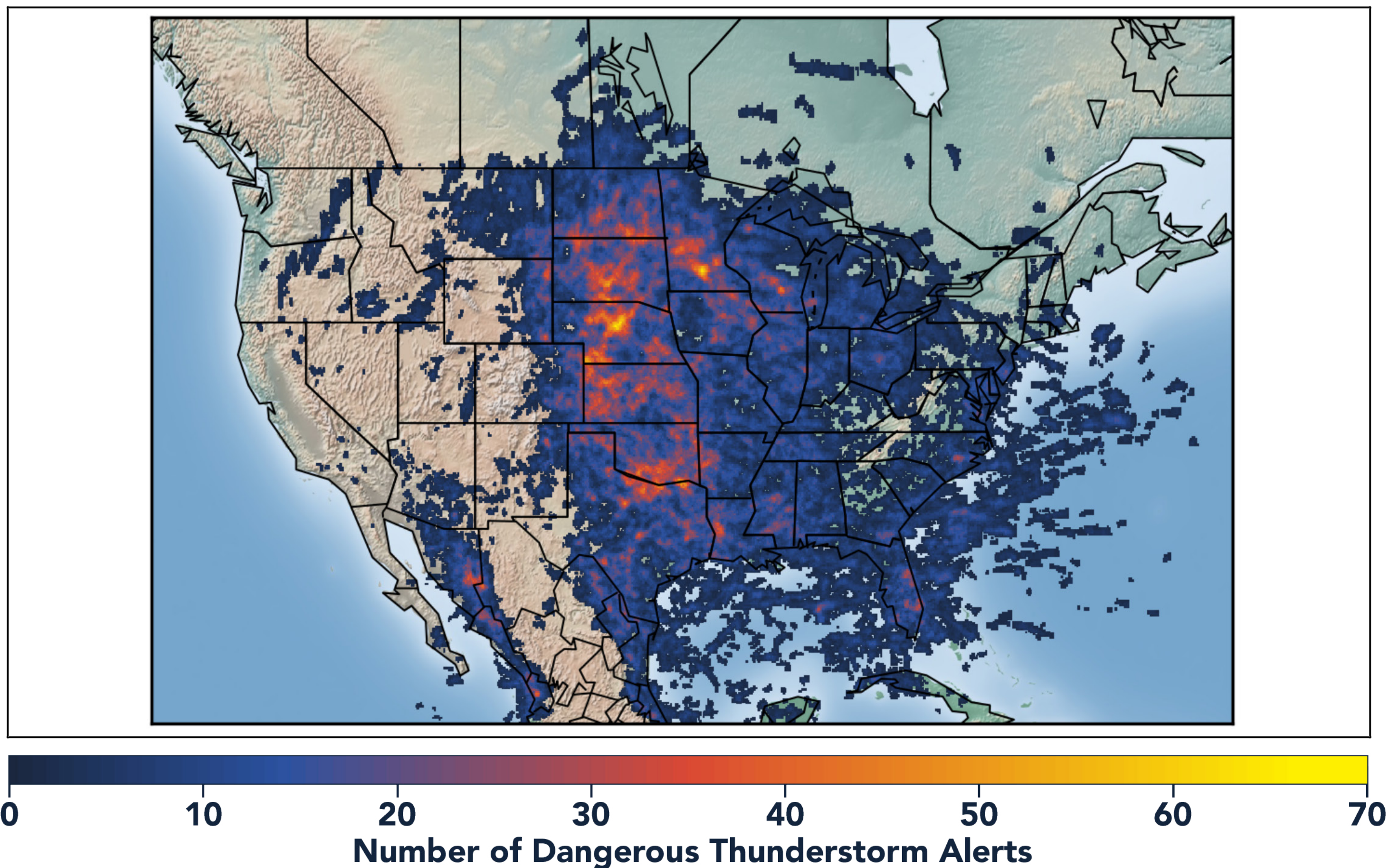
We cluster pulses together into a flash. With every pulse we detect, we receive a more precise measure of lightning activity. At left, areas in bright yellow experienced the highest lightning pulse density per square mile in 2020.

TOTAL PULSE DENSITY RANKINGS

This chart shows the top 15 counties in the state ranked by total pulse density, which is the total lightning divided by the area of the county (in square miles).



DANGEROUS THUNDERSTORM ALERTS IN THE U.S.



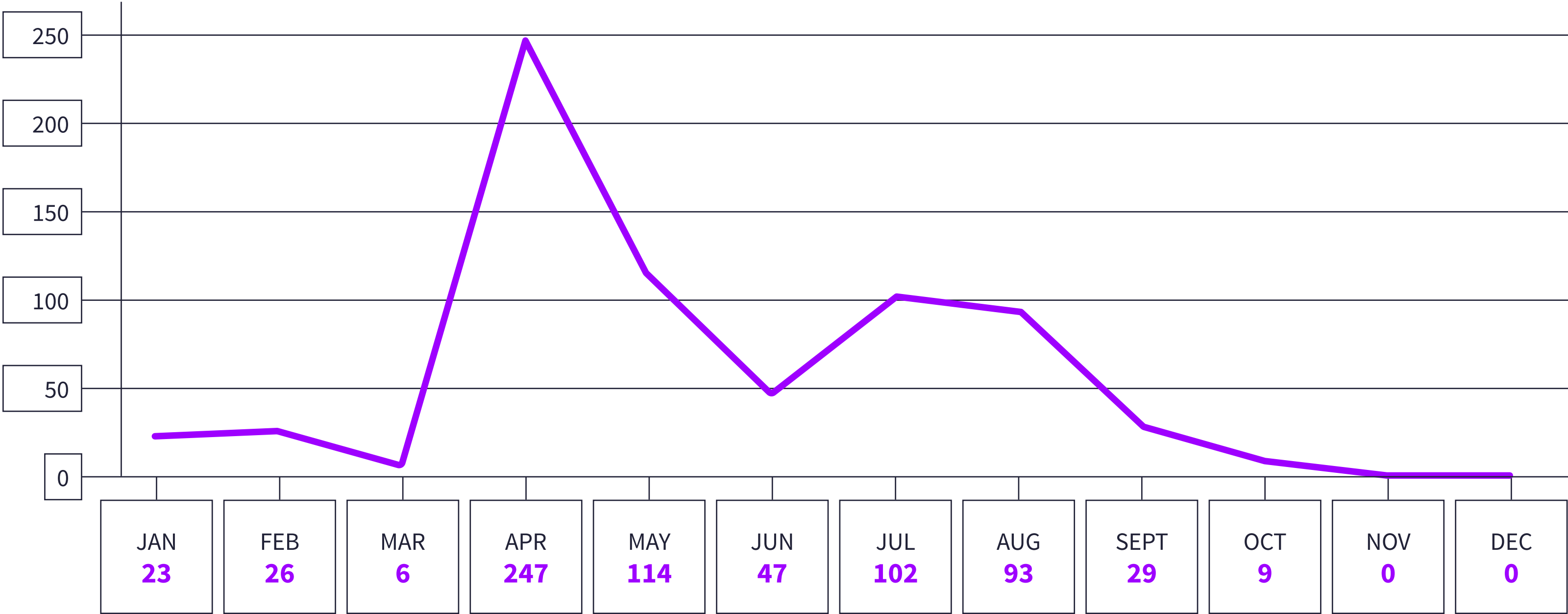
Earth Networks issued 29,401 Dangerous Thunderstorm Alerts (DTAs) in 2020. This year's map clearly shows the persistent drought conditions that have plagued the South and Southwest.

Dangerous Thunderstorm Alerts (DTAs), available exclusively to Earth Networks, provide **50% more lead time** to severe storms compared to publicly available alerts.

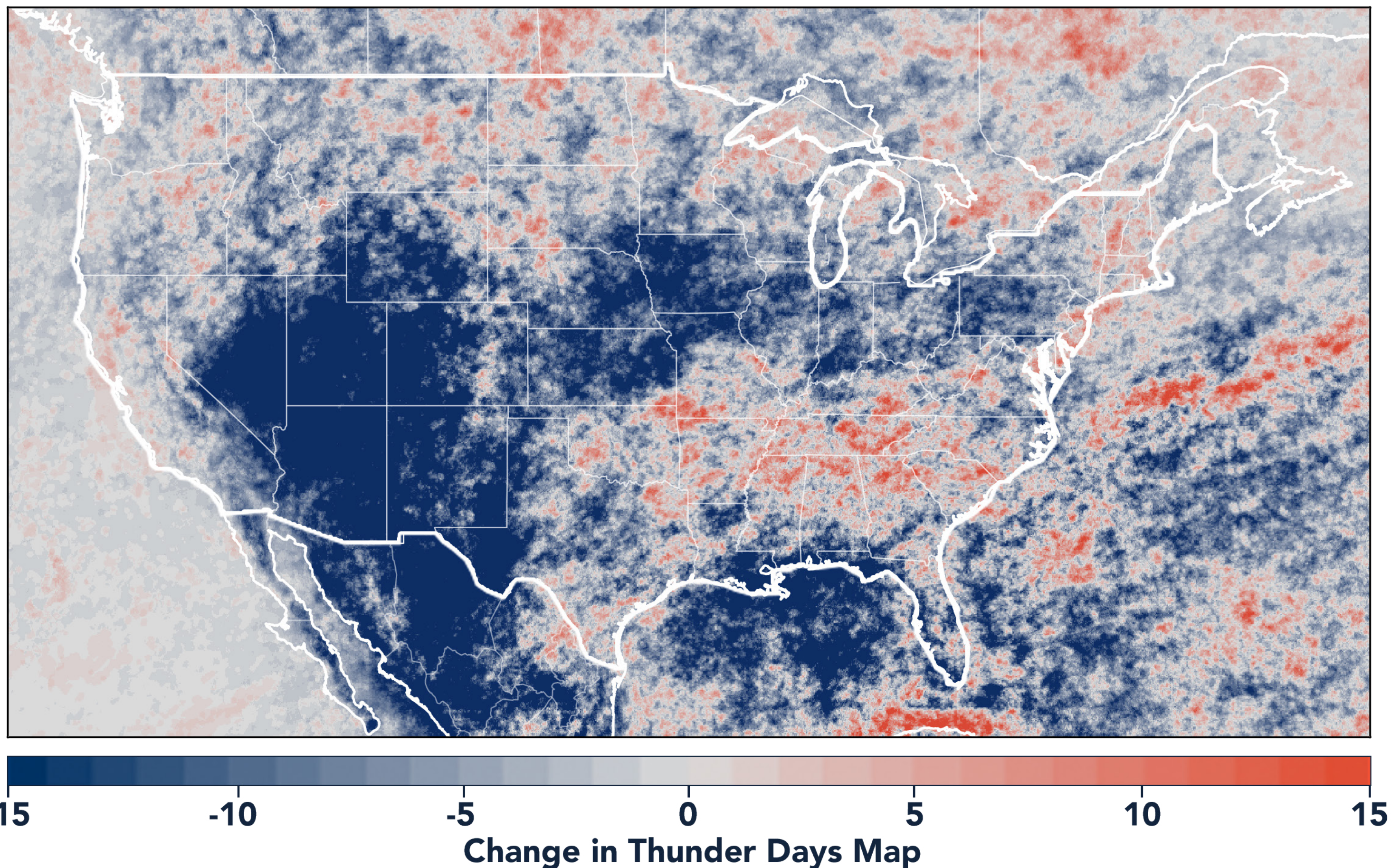
DANGEROUS THUNDERSTORM ALERTS BY MONTH

Earth Networks issued 696 Dangerous Thunderstorm Alerts for the state in 2020.

LOUISIANA



TOTAL STATE THUNDER DAYS: 230



Thunder Days are the days we detected lightning over a certain area. The map shows a deviation from our 7-year average and illustrates our overall finding that lightning decreased about 15% from 2019.

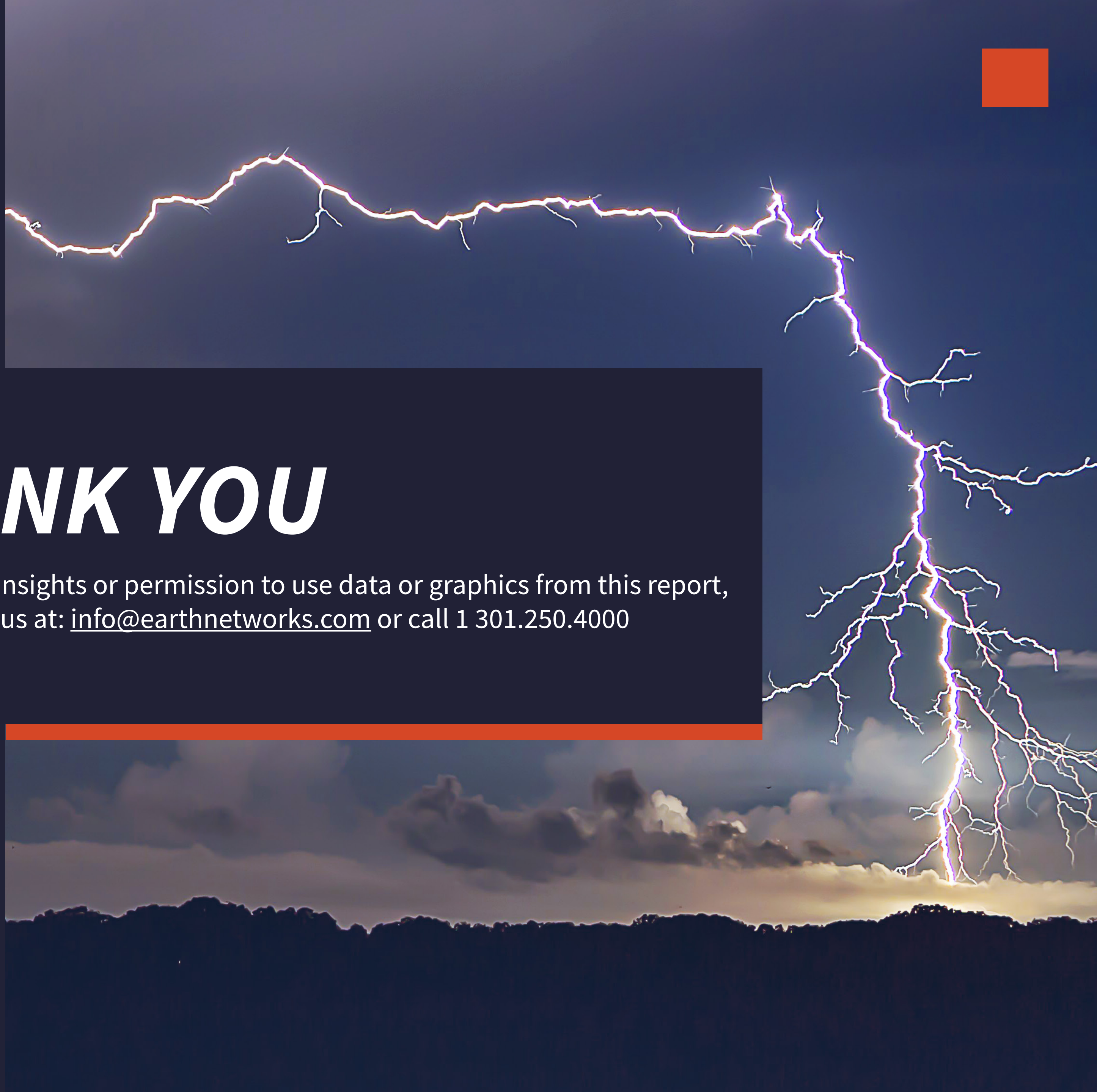
This year, the Southwest and Midwest experienced significantly less lightning than in previous years due to a persistent drought and weak monsoon. States in the Southeast experienced a substantial uptick in lightning activity this year, including Tennessee, North Carolina, South Carolina, Virginia, West Virginia, Georgia, Alabama, Mississippi, Florida, Louisiana, Arkansas, and Kentucky.



www.earthnetworks.com

THANK YOU

For additional insights or permission to use data or graphics from this report, please contact us at: info@earthnetworks.com or call 1 301.250.4000



APPENDIX

This table ranks all U.S. states by total lightning pulses, including in-cloud and cloud-to-ground from highest to lowest. Total number of thunder days in each state (the total number of days in the year when lightning was detected by ENTLN) are also included. The period covered is January 1, 2020 to December 31, 2020.

STATE	TOTAL LIGHTNING PULSES	TOTAL THUNDER DAYS
TX	63,683,799	278
FL	35,430,198	246
OK	26,159,420	205
KS	23,125,675	179
IL	16,785,149	166
NE	14,433,875	178
MO	14,081,658	184
VA	13,234,163	176
GA	13,016,803	217
OH	12,009,955	143
SD	11,940,870	156
LA	11,787,379	230
AL	11,448,621	202
AR	11,417,155	211
NC	10,666,834	203
PA	10,024,978	151
MS	9,236,279	210
IN	9,175,986	149
IA	9,121,097	140
WI	8,812,327	145
TN	8,458,373	186
MN	8,009,792	148
KY	7,974,926	166
MI	7,769,382	159
ND	7,634,287	131
SC	7,454,219	197
CO	7,360,769	185
MD	6,666,766	124
NM	5,819,550	196
MT	5,107,593	154
WY	4,951,397	166
NY	4,943,122	152
WV	4,684,226	150
AZ	3,532,759	151
NJ	3,465,297	96
UT	1,951,574	162
ID	1,518,171	172
MA	1,267,046	80
NV	1,237,862	146
DE	1,168,918	89
CA	956,187	151
OR	915,855	132
CT	802,252	70
NH	618,242	70
WA	402,333	117
ME	358,334	81
VT	354,695	75
RI	190,992	42
DC	44,204	47

APPENDIX

This table ranks all counties in the state by total lightning pulses, including in-cloud and cloud to-ground from highest to lowest. Total number of thunder days in each county (the total number of days in the year when lightning was detected by ENTLN) are also included. The period covered is January 1, 2020 to December 31, 2020.

COUNTY	TOTAL LIGHTNING PULSES	TOTAL THUNDER DAYS
Cameron Parish	788,458	132
Sabine Parish	667,911	99
Vernon Parish	662,578	111
Beauregard Parish	494,780	109
Natchitoches Parish	494,738	113
Calcasieu Parish	457,789	117
Vermilion Parish	409,985	123
De Soto Parish	323,950	90
Rapides Parish	304,409	110
Plaquemines Parish	277,876	120
Caddo Parish	276,340	103
Lafourche Parish	274,827	113
St. Bernard Parish	250,938	111
Jefferson Davis Parish	230,372	110
Bossier Parish	230,347	93
Terrebonne Parish	229,646	113
Winn Parish	204,817	89
Iberia Parish	200,240	122
Allen Parish	191,345	103
Bienville Parish	190,915	84
St. Landry Parish	177,336	106
St. Tammany Parish	174,159	108
St. Martin Parish	169,550	118
Morehouse Parish	154,054	81
Grant Parish	145,719	96
Claiborne Parish	143,461	80
Avoyelles Parish	143,025	105
Red River Parish	138,985	77
Madison Parish	134,876	88
Union Parish	133,955	86
St. Mary Parish	133,206	108
Tangipahoa Parish	131,699	111
Catahoula Parish	131,193	99
Evangeline Parish	127,824	102
Webster Parish	123,144	77
Concordia Parish	122,948	108
Acadia Parish	121,692	109
Caldwell Parish	120,252	82
East Carroll Parish	115,995	82
Livingston Parish	114,647	101
Iberville Parish	114,407	101
LaSalle Parish	111,796	90
Richland Parish	105,277	76
Jackson Parish	102,726	79
Franklin Parish	99,359	90
Tensas Parish	97,742	88

COUNTY	TOTAL LIGHTNING PULSES	TOTAL THUNDER DAYS
Washington Parish	97,090	96
Ouachita Parish	91,465	78
West Carroll Parish	80,963	65
Jefferson Parish	79,468	106
Pointe Coupee Parish	77,727	97
East Feliciana Parish	76,115	86
East Baton Rouge Parish	75,111	90
St. Charles Parish	70,802	95
Lafayette Parish	66,485	97
Lincoln Parish	65,625	69
St. Helena Parish	58,419	87
St. John the Baptist Parish	57,273	94
West Feliciana Parish	54,000	90
Orleans Parish	49,416	87
Assumption Parish	37,813	94
Ascension Parish	34,359	94
West Baton Rouge Parish	27,153	75
St. James Parish	24,402	87