



2020

MONTANA LIGHTNING REPORT



ABOUT THIS REPORT

The 2020 Lightning Report was prepared by Earth Networks using the Earth Networks Total Lightning Network (ENTLN). The following report includes in-cloud, cloud-to-ground, and total lightning data for this state and the surrounding water bodies (if any) throughout 2020. Counts, densities, rankings, Dangerous Thunderstorm Alerts (DTAs), and Thunder Days in this report are from January 1, 2020 to December 31, 2020.

THE EARTH NETWORKS TOTAL LIGHTNING NETWORK (ENTLN)

The lightning data in this report is derived from the Earth Networks Total Lightning Network (ENTLN), which monitors the combination of in-cloud and cloud-to-ground lightning strikes over 100 countries. With over 1,800 sensors, the ENTLN is the most extensive and technologically advanced total lightning network in the world. ENTLN has been specifically deployed to detect real-time lightning and provide advanced warning for severe weather events that could threaten public safety and operational efficiency.

IN THIS REPORT



Table of Contents

- 03** Report Terminology
- 04** Lightning Counts
- 06** Lightning Density
- 08** Dangerous Thunderstorm Alerts
- 09** Thunder Days
- 10** Contact

REPORT TERMINOLOGY

To help you better understand the insights from this lightning report, we've included definitions of our frequently used report terminology below.

Lightning Pulse: This report measures lightning pulses. A pulse is a surge of electric current in lightning usually accompanied by a burst of light. Pulses are classified as In-cloud (IC) or Cloud-to-Ground (CG).

Lightning Flash: A lightning flash is a collection of pulses close in space and time that approximates the continuous ionized channels of a complete bolt of lightning.

Cloud-to-Ground Lightning (CG): Lightning that happens between opposite charges in a cloud and on the ground.

In-Cloud Lightning (IC): Lightning that occurs between opposite charges within a thunderstorm cloud.

Total Lightning Detection: The combination of all in-cloud and cloud-to-ground lightning activity.

Pulse Density: The number of lightning pulses per square mile per year.

Dangerous Thunderstorm Alerts (DTAs): Earth Networks patented advanced severe weather warnings that notify users of incoming storms up to 45 minutes before storm arrival.

Thunder Days: Any given day where lightning was detected in a certain area.

TOTAL LIGHTNING

is the combination of cloud-to-ground (CG) and in-cloud (IC) lightning strikes



Cloud-to-Ground lightning:

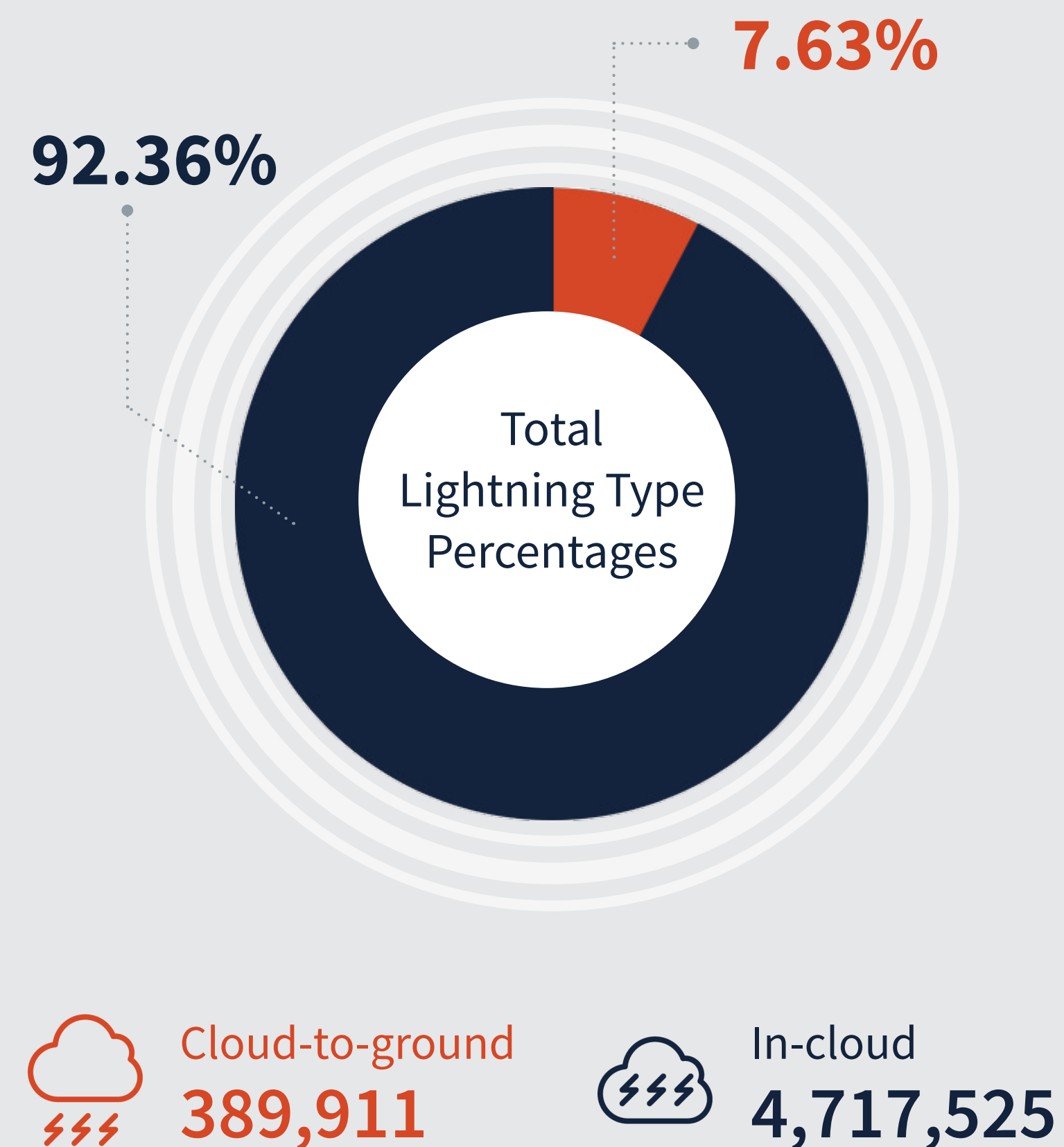
Lightning that happens between opposite charges in a cloud and on the ground

In-Cloud lightning:

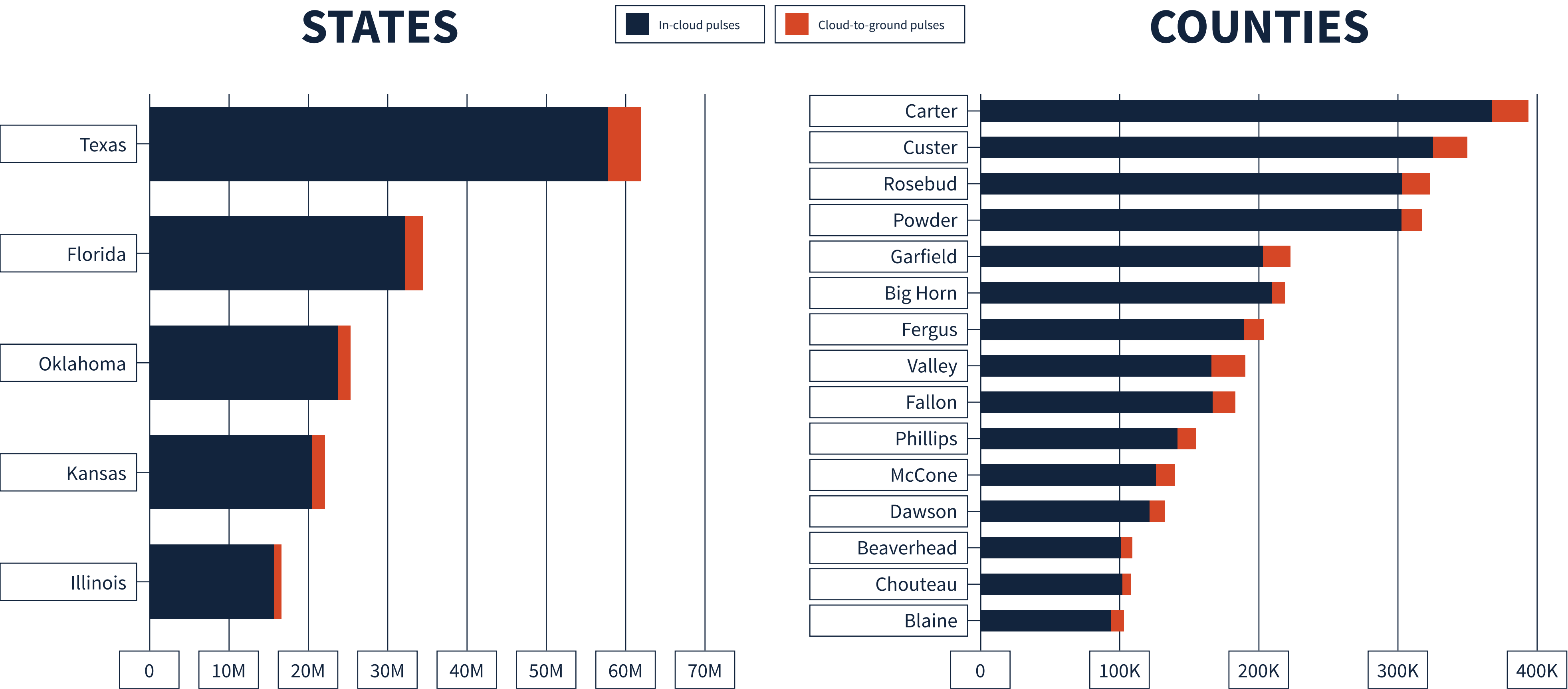
Lightning that occurs between opposite charges within a thunderstorm cloud

MONTANA TOTAL LIGHTNING PULSES

5,107,593

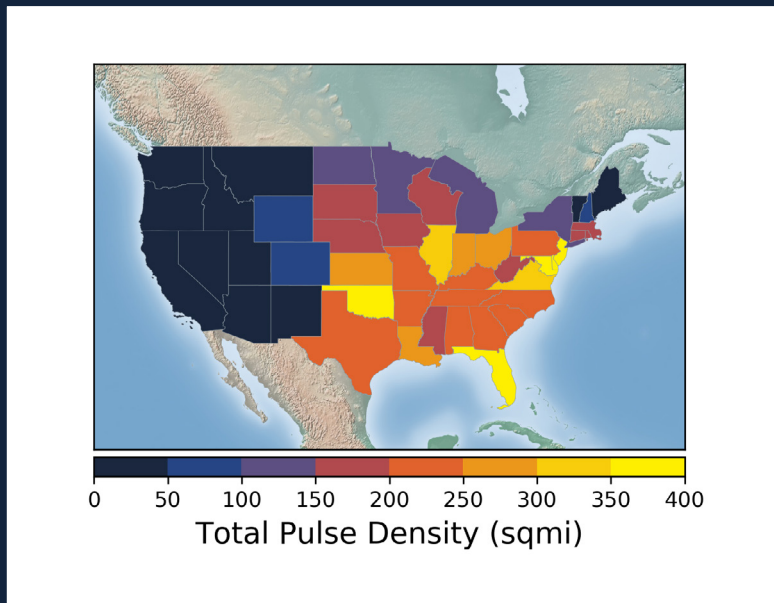
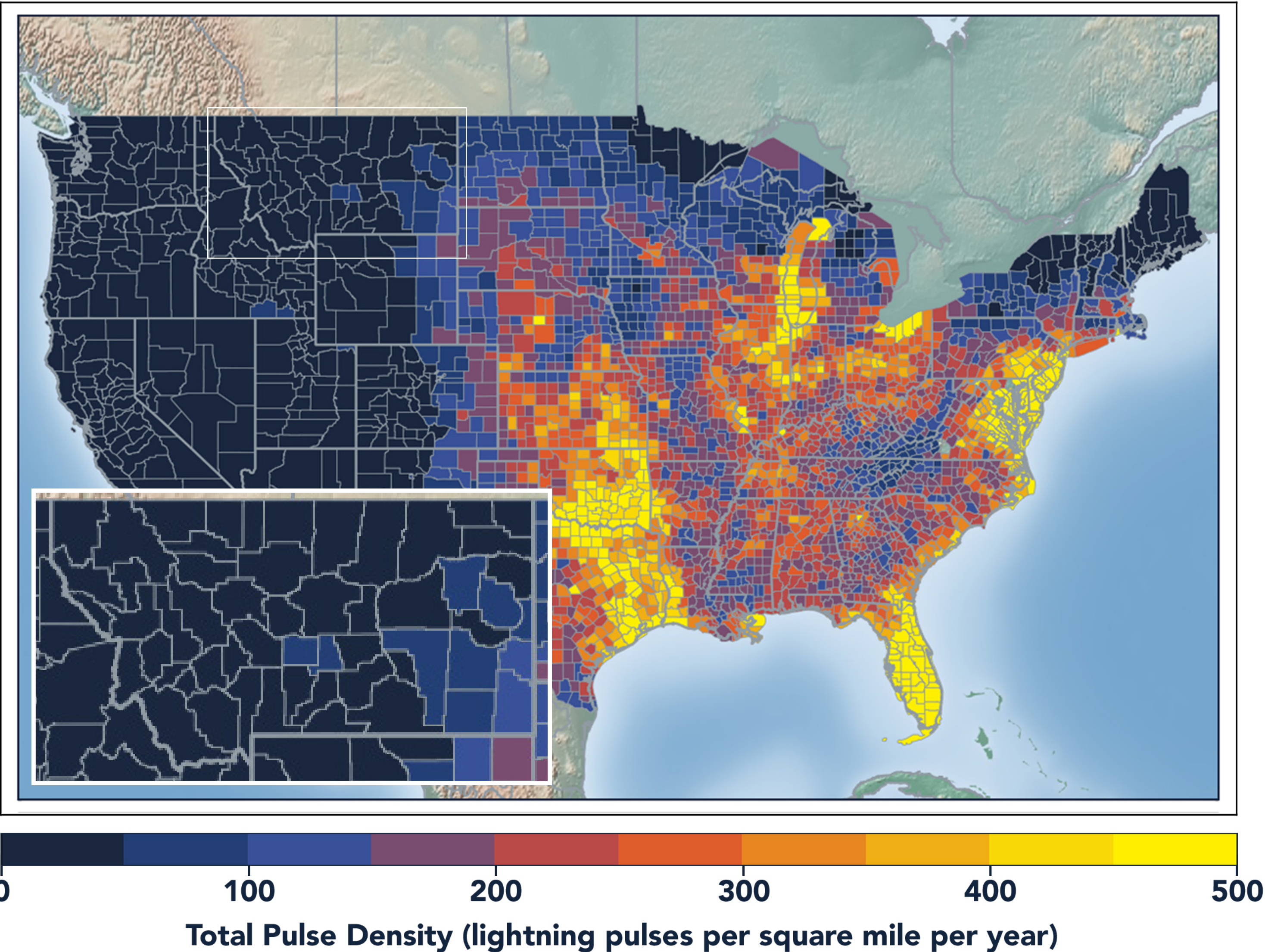


LIGHTNING COUNT RANKINGS



Montana ranked 30 in total lightning pulses for 2020.

TOTAL (CG+IC) PULSE DENSITY MAP



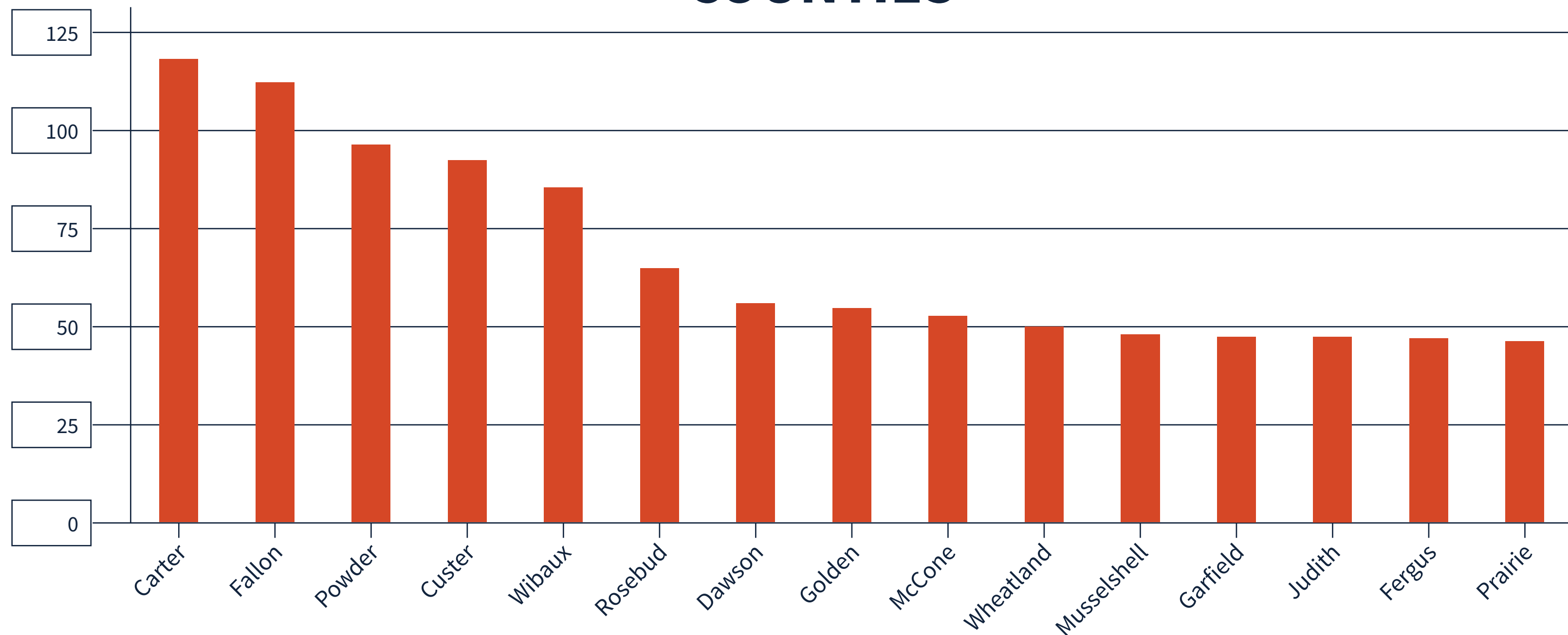
Pulse density is a better indicator of lightning activity than total lightning counts because it enables us to compare different sized areas (like states and counties) fairly.

We cluster pulses together into a flash. With every pulse we detect, we receive a more precise measure of lightning activity. At left, areas in bright yellow experienced the highest lightning pulse density per square mile in 2020.

TOTAL PULSE DENSITY RANKINGS

This chart shows the top 15 counties in the state ranked by total pulse density, which is the total lightning divided by the area of the county (in square miles).

COUNTIES



DANGEROUS THUNDERSTORM ALERTS IN THE U.S.

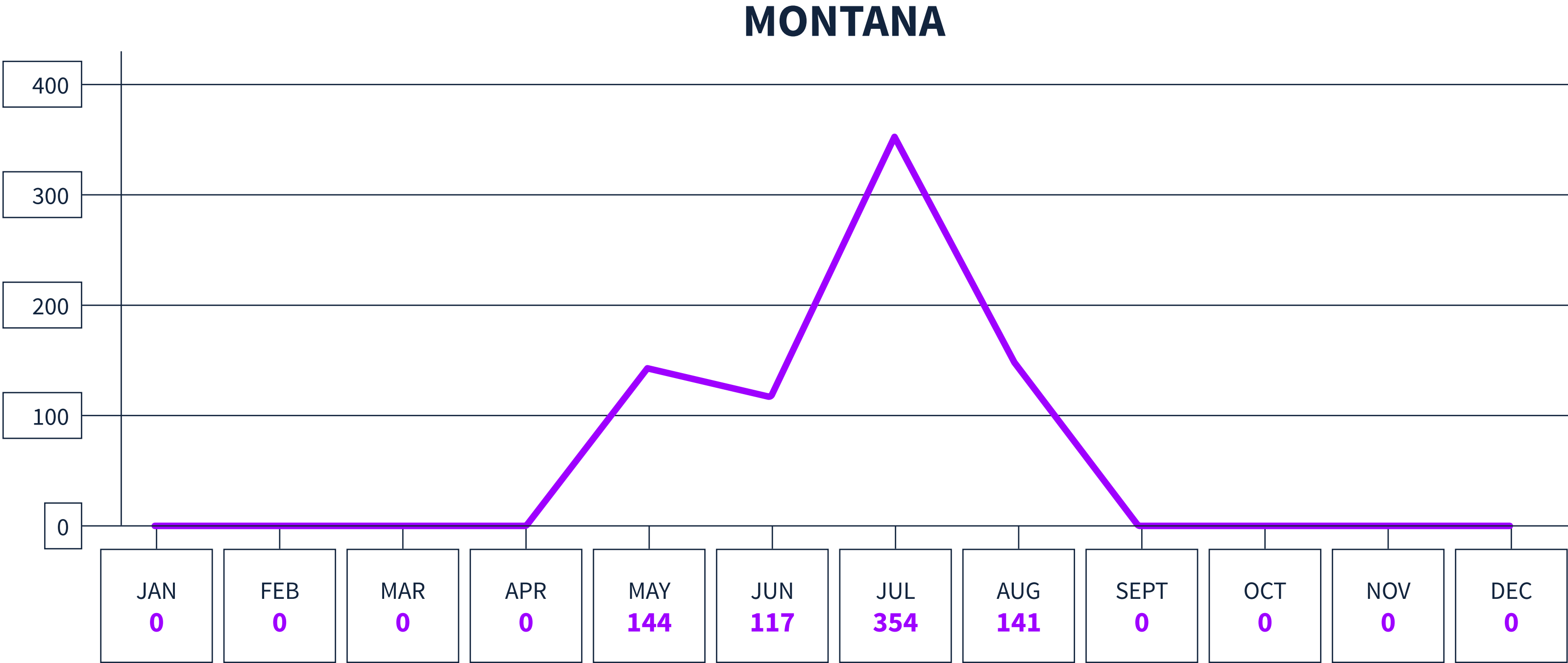


Earth Networks issued 29,401 Dangerous Thunderstorm Alerts (DTAs) in 2020. This year's map clearly shows the persistent drought conditions that have plagued the South and Southwest.

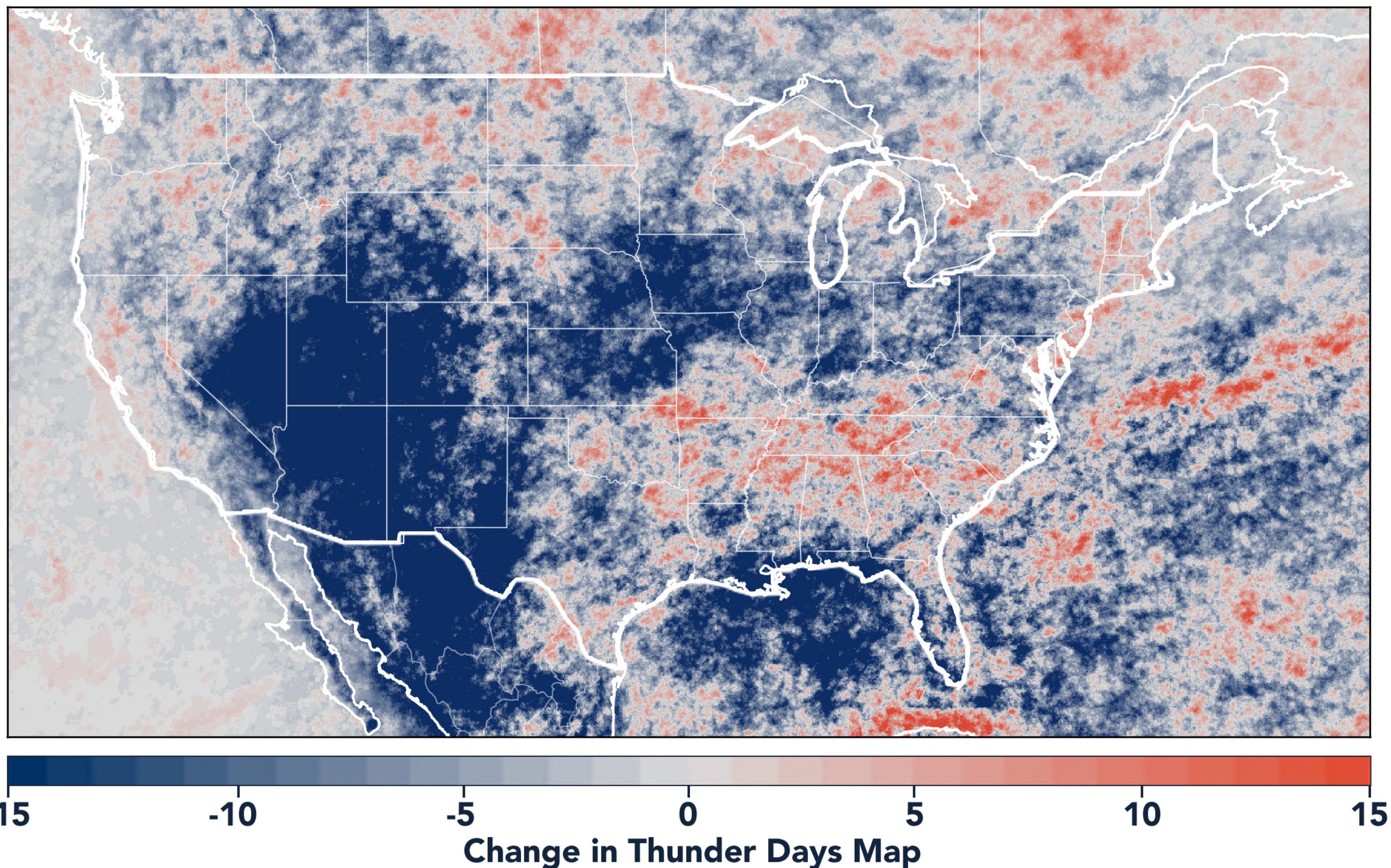
Dangerous Thunderstorm Alerts (DTAs), available exclusively to Earth Networks, provide **50% more lead time** to severe storms compared to publicly available alerts.

DANGEROUS THUNDERSTORM ALERTS BY MONTH

Earth Networks issued 756 Dangerous Thunderstorm Alerts for the state in 2020.



TOTAL STATE THUNDER DAYS: 154



Thunder Days are the days we detected lightning over a certain area. The map shows a deviation from our 7-year average and illustrates our overall finding that lightning decreased about 15% from 2019.

This year, the Southwest and Midwest experienced significantly less lightning than in previous years due to a persistent drought and weak monsoon. States in the Southeast experienced a substantial uptick in lightning activity this year, including Tennessee, North Carolina, South Carolina, Virginia, West Virginia, Georgia, Alabama, Mississippi, Florida, Louisiana, Arkansas, and Kentucky.



www.earthnetworks.com

THANK YOU

For additional insights or permission to use data or graphics from this report, please contact us at: info@earthnetworks.com or call 1 301.250.4000



APPENDIX

This table ranks all U.S. states by total lightning pulses, including in-cloud and cloud-to-ground from highest to lowest. Total number of thunder days in each state (the total number of days in the year when lightning was detected by ENTLN) are also included. The period covered is January 1, 2020 to December 31, 2020.

STATE	TOTAL LIGHTNING PULSES	TOTAL THUNDER DAYS
TX	63,683,799	278
FL	35,430,198	246
OK	26,159,420	205
KS	23,125,675	179
IL	16,785,149	166
NE	14,433,875	178
MO	14,081,658	184
VA	13,234,163	176
GA	13,016,803	217
OH	12,009,955	143
SD	11,940,870	156
LA	11,787,379	230
AL	11,448,621	202
AR	11,417,155	211
NC	10,666,834	203
PA	10,024,978	151
MS	9,236,279	210
IN	9,175,986	149
IA	9,121,097	140
WI	8,812,327	145
TN	8,458,373	186
MN	8,009,792	148
KY	7,974,926	166
MI	7,769,382	159
ND	7,634,287	131
SC	7,454,219	197
CO	7,360,769	185
MD	6,666,766	124
NM	5,819,550	196
MT	5,107,593	154
WY	4,951,397	166
NY	4,943,122	152
WV	4,684,226	150
AZ	3,532,759	151
NJ	3,465,297	96
UT	1,951,574	162
ID	1,518,171	172
MA	1,267,046	80
NV	1,237,862	146
DE	1,168,918	89
CA	956,187	151
OR	915,855	132
CT	802,252	70
NH	618,242	70
WA	402,333	117
ME	358,334	81
VT	354,695	75
RI	190,992	42
DC	44,204	47

APPENDIX

This table ranks all counties in the state by total lightning pulses, including in-cloud and cloud to-ground from highest to lowest. Total number of thunder days in each county (the total number of days in the year when lightning was detected by ENTLN) are also included. The period covered is January 1, 2020 to December 31, 2020.

COUNTY	TOTAL LIGHTNING PULSES	TOTAL THUNDER DAYS
Carter County	394,455	77
Custer County	350,207	63
Rosebud County	323,393	67
Powder River County	317,235	69
Garfield County	223,325	64
Big Horn County	219,517	79
Fergus County	204,024	61
Valley County	190,431	54
Fallon County	183,214	47
Phillips County	155,783	55
McCone County	140,388	52
Dawson County	133,028	51
Beaverhead County	109,874	82
Chouteau County	109,137	61
Blaine County	103,845	57
Yellowstone County	102,355	63
Musselshell County	90,019	56
Madison County	89,415	83
Judith Basin County	88,707	62
Richland County	84,055	51
Prairie County	80,751	54
Wibaux County	75,914	49
Wheatland County	71,284	57
Petroleum County	70,258	48
Sweet Grass County	69,920	73
Golden Valley County	64,318	50
Hill County	61,180	50
Roosevelt County	61,041	41
Park County	56,025	87
Sheridan County	55,999	40
Gallatin County	54,282	78
Flathead County	52,641	57
Stillwater County	52,252	72
Meagher County	51,405	55
Cascade County	51,325	50
Teton County	49,398	38
Daniels County	48,701	37
Lincoln County	45,468	38
Lewis and Clark County	42,722	52
Carbon County	38,129	72
Treasure County	38,024	43
Liberty County	36,532	36
Jefferson County	34,007	57
Sanders County	33,939	38
Powell County	25,655	51
Ravalli County	24,494	46

COUNTY	TOTAL LIGHTNING PULSES	TOTAL THUNDER DAYS
Glacier County	23,322	37
Granite County	21,263	44
Pondera County	18,815	37
Broadwater County	17,968	46
Silver Bow County	15,502	39
Lake County	13,423	28
Toole County	12,653	47
Deer Lodge County	11,899	44
Missoula County	9,686	40
Mineral County	4,836	23